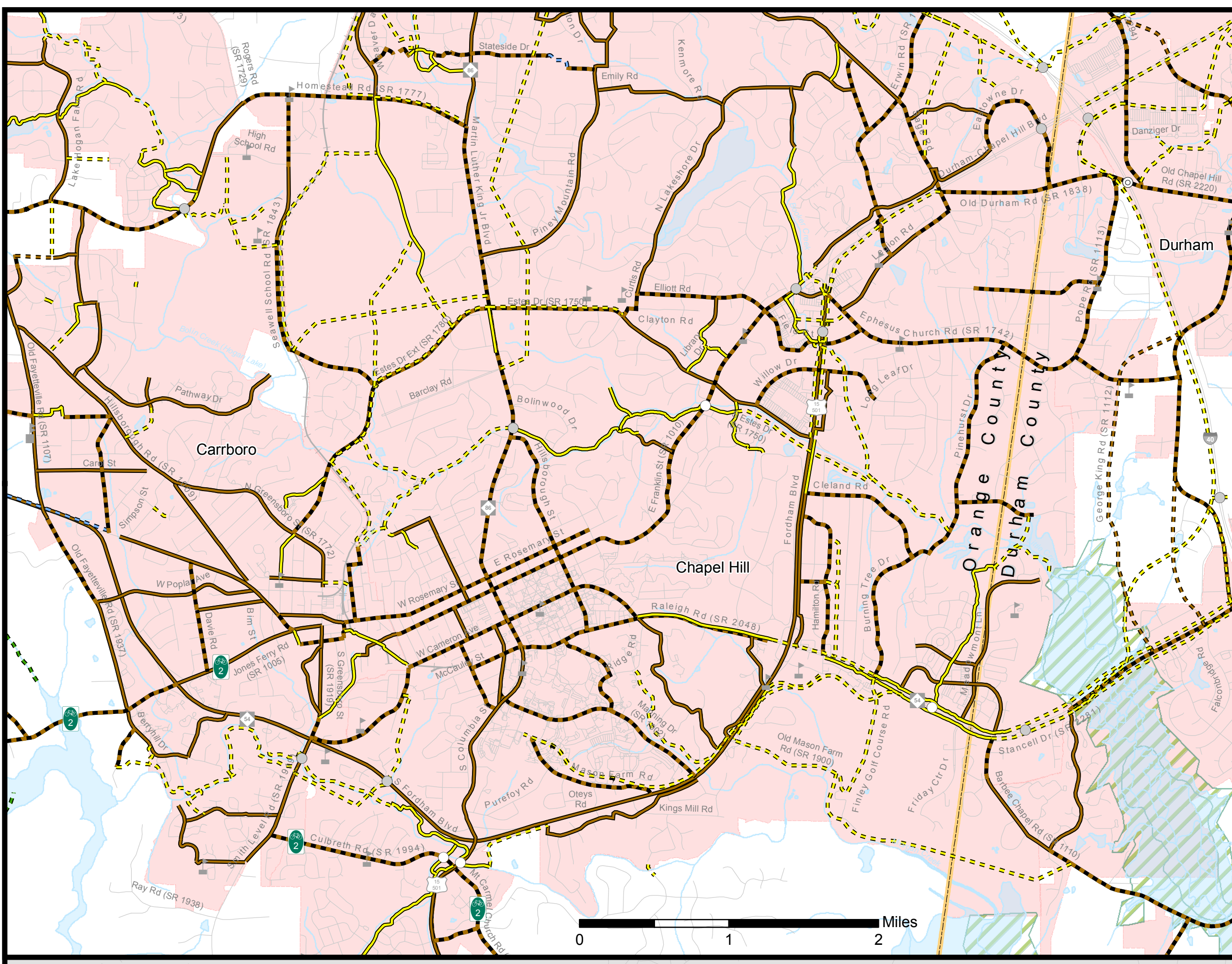
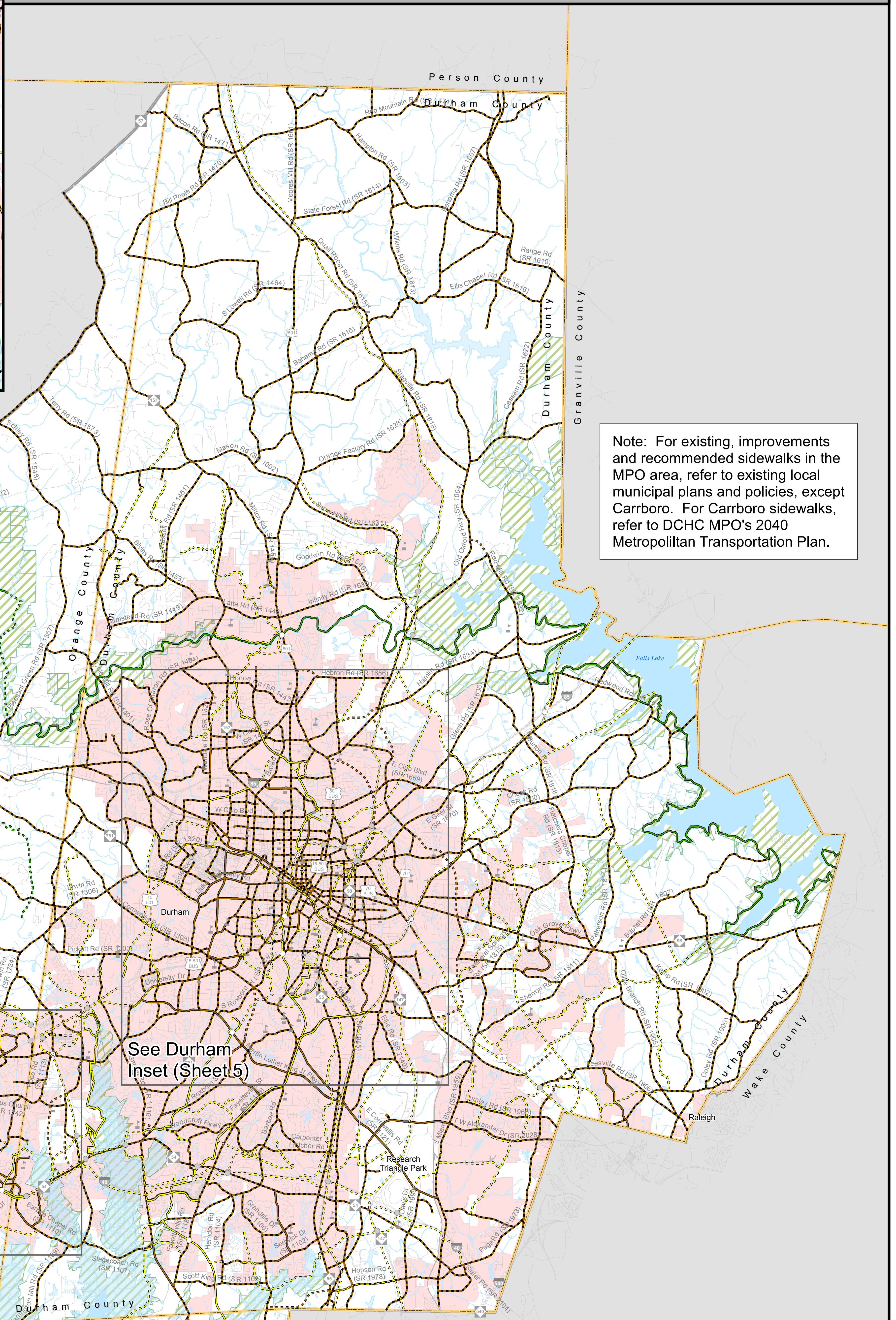


DCHC MPO - CTP BICYCLE AND PEDESTRIAN MAP



Carrboro, Chapel Hill and SW Durham Inset



Note: For existing, improvements and recommended sidewalks in the MPO area, refer to existing local municipal plans and policies, except Carrboro. For Carrboro sidewalks, refer to DCHC MPO's 2040 Metropolitan Transportation Plan.

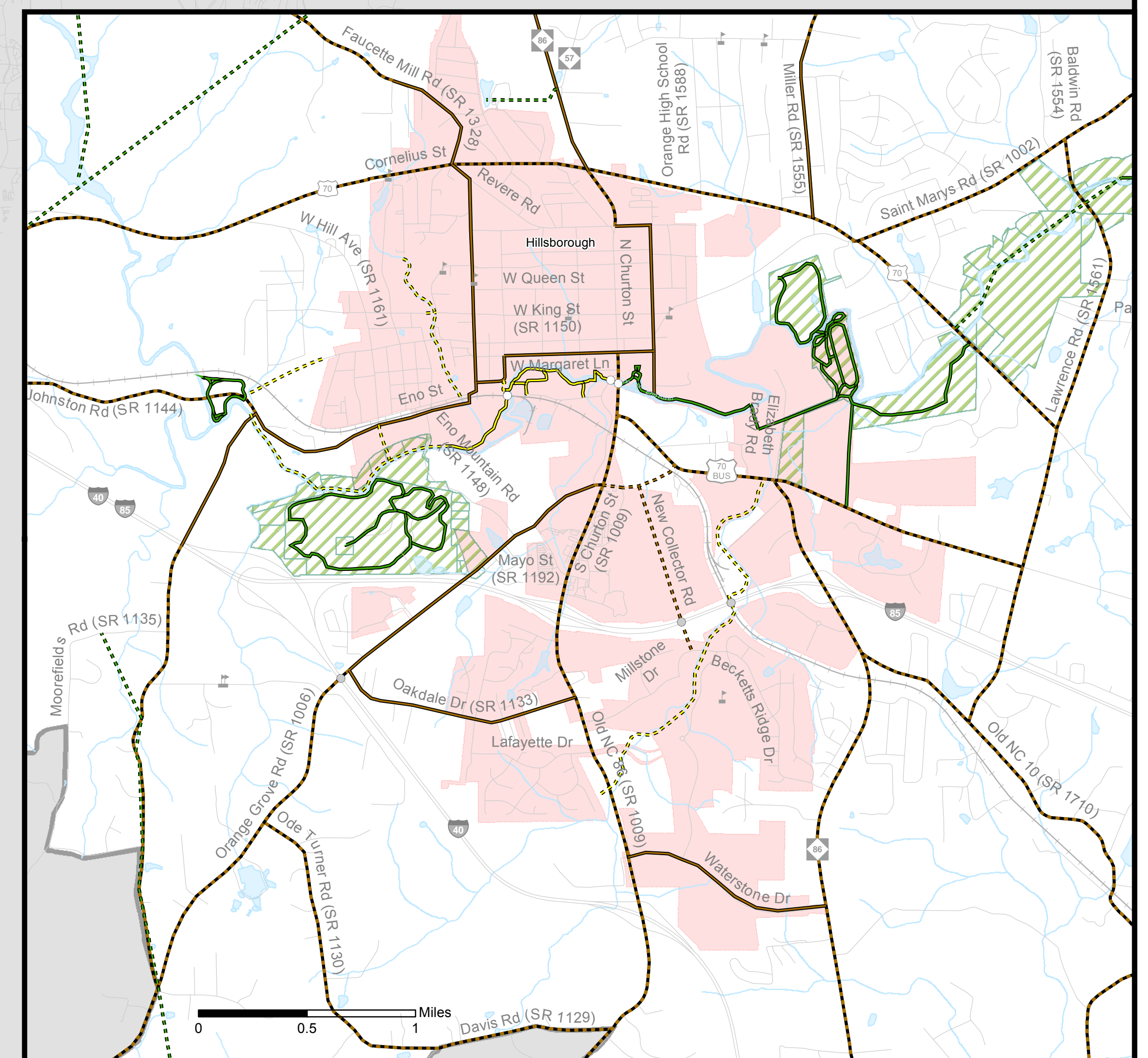
Note: For existing, improvements and recommended sidewalks in the MPO area, refer to existing local municipal plans and policies, except Carrboro. For Carrboro sidewalks, refer to DCHC MPO's 2040 Metropolitan Transportation Plan.

See Hillsborough Inset

See Durham Inset (Sheet 5)

See Carrboro, Chapel Hill and SW Durham Inset

Hillsborough Inset



Note: For existing, improvements and recommended sidewalks in the MPO area, refer to existing local municipal plans and policies, except Carrboro. For Carrboro sidewalks, refer to DCHC MPO's 2040 Metropolitan Transportation Plan.

Note: The concepts shown on a CTP are for planning purposes and are subject to change. These concepts will need additional analysis to meet state and federal environmental regulations, to determine final locations and designs, and to be funded for implementation. Local zoning or subdivision ordinances may require the dedication of right of way based on the concepts shown on the CTP and local collector street plans, based on N.C.G.S. § 136-66.2 and § 136-66.10.

Note: A multi-use path, or other bicycle and pedestrian accommodations as needed, is recommended adjacent to the Durham-Orange Light Rail Transit (D-O LRT) alignment. For more information on the D-O LRT Project, go to <http://www.ourtransitfuture.com>.

Note: The Strategic Transportation Investments (STI) law (House Bill 817) establishes design elements that emphasize safety, mobility, complete streets, and accessibility for multiple modes of travel. The "typical" highway cross sections used in this CTP were updated on May 5, 2014 in response to STI law.

NC DOT's Complete Streets Policy "requires that NC DOT's planners and designers will consider and incorporate multimodal alternatives in the design and improvement of all appropriate transportation projects within a growth area of a town or city unless exceptional circumstances exist." (For more information on Complete Streets, go to <http://www.completestreetsnc.org/>).

<p>Bicycle On-road</p> <ul style="list-style-type: none"> Existing Needs Improvement Recommended <p>Bicycle Off-road</p> <ul style="list-style-type: none"> Recommended <p>Pedestrian Off-road</p> <ul style="list-style-type: none"> Existing Needs Improvement Recommended 	<p>Multi-Use Paths</p> <ul style="list-style-type: none"> Existing Needs Improvement Recommended <p>Grade Separations</p> <ul style="list-style-type: none"> Existing Needs Improvement Recommended <p>Schools</p> <ul style="list-style-type: none"> North Carolina Bike Route Hydrography (1:24k scale)
--	--

Scale: 0 1 2 Miles

Sheet 4 of 5

Base map date: December 14, 2016
Refer to CTP document for more details

Bicycle and Pedestrian Map

Durham-Chapel Hill-Carrboro MPO

Comprehensive Transportation Plan

Plan date: May 10, 2017

